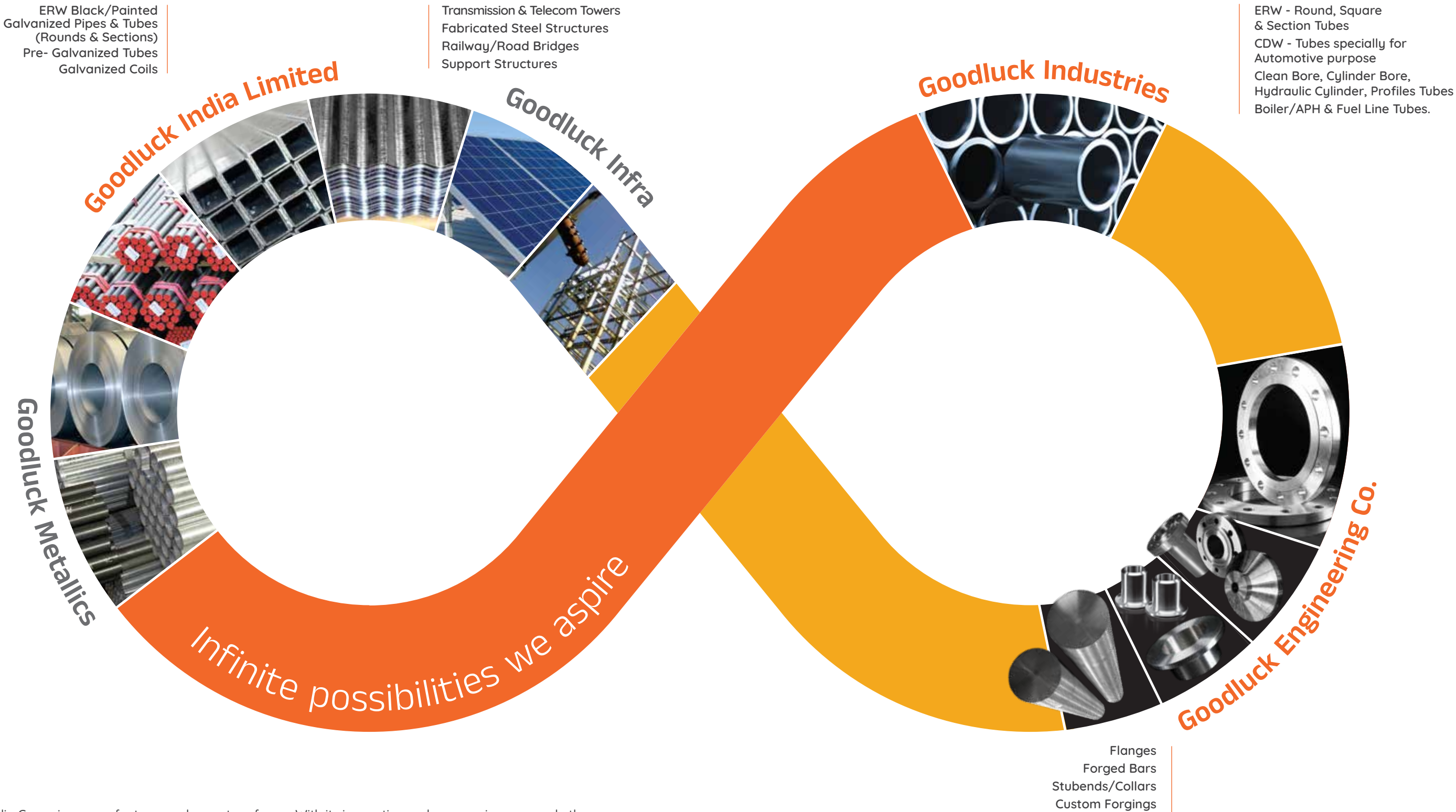




Flanges
Forged Bars
Stubends/Collars
Custom Forgings

GOODLUCK
Goodluck Engineering Co.

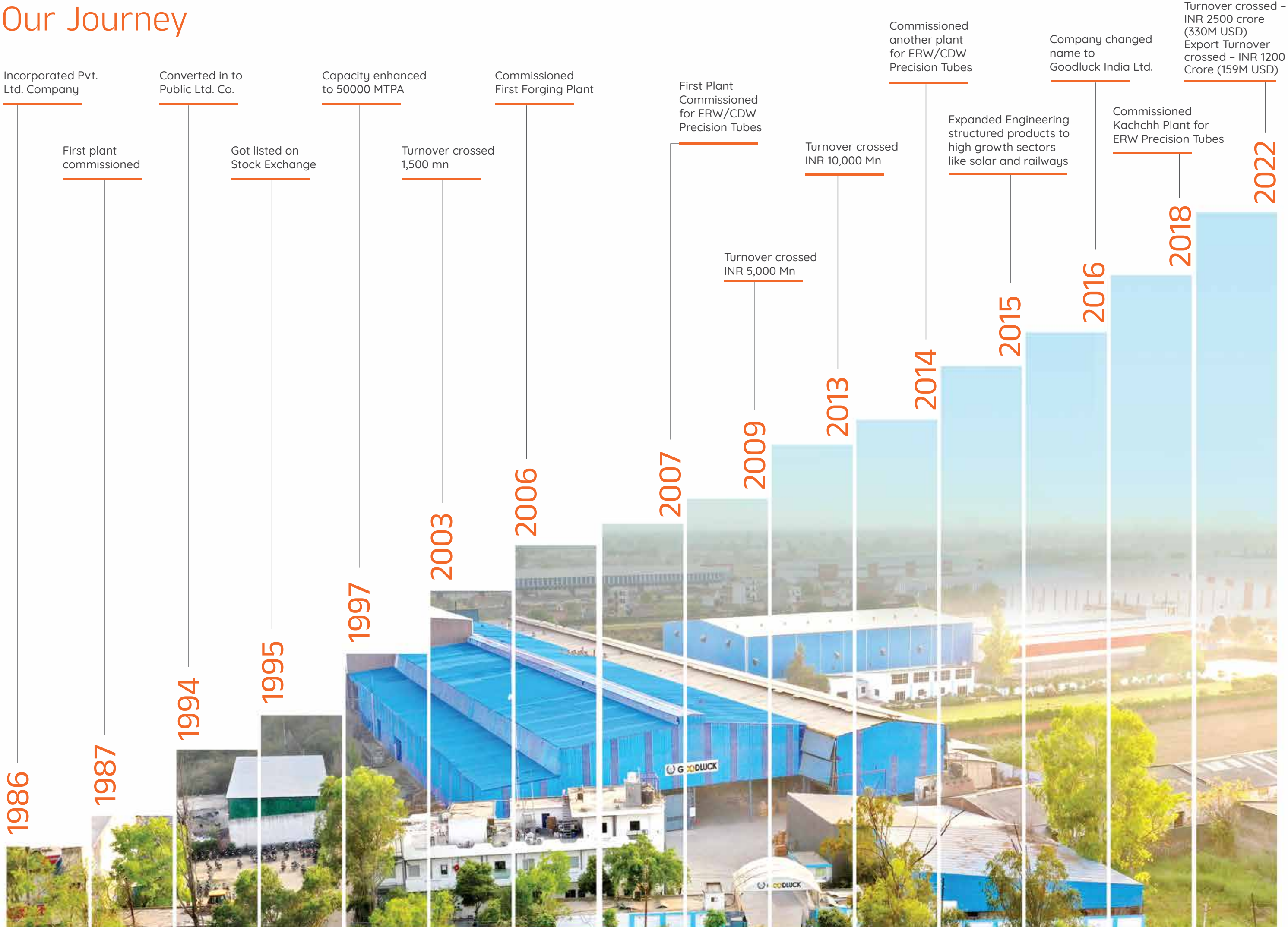
A versatile business group with **strong foundation**



Goodluck India Group is a manufacturer and exporter of wide range of ERW Hot Dip Galvanized Pipes, Black Pipes, Black & GI Hollow Sections, CR Coils, CRCA, Galvanized Plain & Corrugated Sheets, ERW Precision & CDW Tubes, Power & Telecom Towers, Solar Structures, Forged Flanges and Custom Forgings. The company was established three decades ago.

With its innovative and progressive approach, the group today is one of the leading and fastest business groups in the Steel Industry. An ISO-9001, AS 9100D, IATF-16949, ISO-14001 & OH&SMS-45001 & CE certified organization, Goodluck India Group operates under five verticals; Goodluck India Limited, Goodluck Industries, Goodluck Engineering Co., Goodluck Metallics & Goodluck Infra.

Our Journey





Manufacturing
innovation.
Excellent
quality.



Mastery over forging

World-class manufacturing facility

We forge quality, values and precision in every product

It's all about in-time delivery

Goodluck Engineering

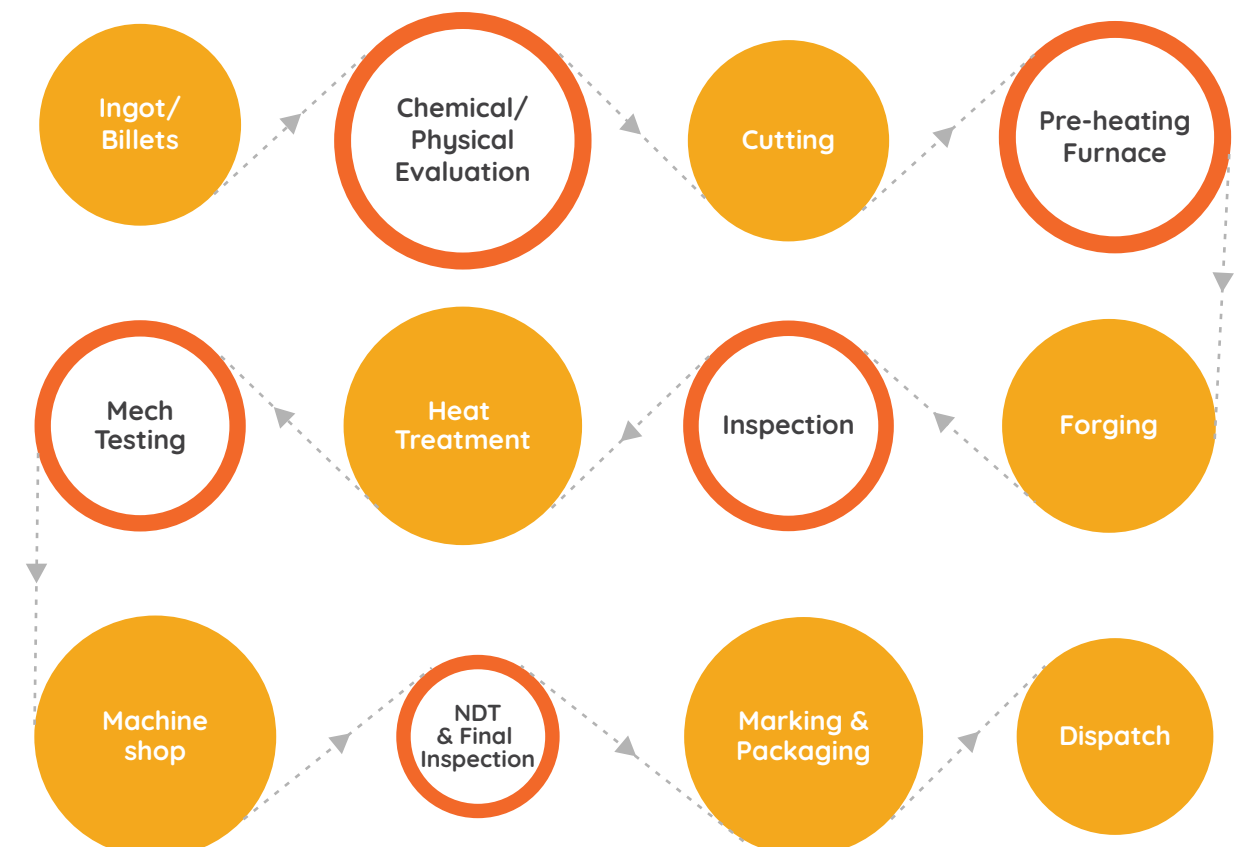
Goodluck Engineering Co. is one of the leading manufacturer of Open and Closed Die Ferrous & Non Ferrous Forgings. An ISO 9001:2008 & AS 9100 D Certified company. We are a government recognized export house having silver seal status and also holding the membership of FIEO, FII and have also received many export excellence awards.

Production Facilities include Open & Close Die Hydraulic Machines along with 3000 Tonne Press with Forging capacity in the range of 3500 Tons per month.

The heat treatment shop is equipped with different types of furnaces Gas, Electric and Drop bottom as per material and process requirements to ensure consistent quality and achieving all the technical parameters of the project.

The forge shop is supported by a cutting shop with band saws ranging in size up to 3000 mm. It has fully-equipped machine shop, comprising CNC turning centers, Vertical Machine Centers, lathes and drilling machines for the in-house machining of all the forgings and flanges.

An Efficient Workflow



Unmatched quality duly certified

Recognized by experts

Certifications

ISO 9001 : 2015 : Bureau Veritas
PED 2014/68/EU &
AD 2000 - Merkblatt WO
ISO 14001 : BSI
ISO 45001 : BSI
ISO 17025 : NABL

Industry Certification

EN 910D/AS 9100D
Aviation, Space & Defence
Norsok M650 : DNV GL
Oil & Gas
IBR Certificate
Indian Boiler Regulation

Our Major Approvals & Customers



Abu Dhabi Oil Company



ONGC



Canadian Registration
Number (CRN)



Kuwait Oil Company



Maire
Tecnimont



Bharat Petroleum
Corporation Ltd.



Larsen & Toubro
LIMITED



Linde AG



Technip



Petrobras



General Electric



Fluor



SAIPEM



McDermott



Kuwait National
Petroleum Company



Emerson



Tecnicas Reunidas




Engineers India Ltd.



Siemens



Godrej



Mitsubishi Heavy
Industries Ltd.



Reliance
Industries Ltd.



Sulzer Pumps



ThyssenKrupp
Industrial
Solutions



Indian Oil
Corporation Ltd.



TOSHIBA
Leading Innovation



Product grades and specifications

Catering to your specific requirements

More than 100 Grades in production with option
of Western Origin Raw Materials.

STAINLESS STEEL GRADES

ASTM	:	304/304L, SS-310, 316/316L, 316Ti, 321, 304H, 316H, 317L, 347, 347H, 904L, 410, 420, 430F, 431, 17-4PH, XM13, XM25 and more
EN	:	1.4307, 1.4404, 1.4571, 1.4541, 1.4021, 1.4104, 1.4057, 1.4542, 1.4432 and more

DUPLEX & SPECIAL | NICKEL ALLOYS

Duplex	:	F51 / F60 (2205), 1.4462, F53 (2507), 1.4410, F55, F44
Nickel Alloys	:	600, 625, 718, 800 H/HT, 825, Alloy 20, Alloy22, Alloy 400, Alloy C276

TITANIUM | ALUMINIUM ALLOYS

Ti & AL Alloy	:	Ti-6AL-4V, Ti-6AL-1.5 Mo-1.5V AL : AA2014, AA2219, AA6061, AA7075, AA 5083 Ti-6AL-6V-2Sn ZrCu
---------------	---	---

CARBON STEEL

A105, SA266, LF2, LF3, EN8, EN9, F42, F52, F60, F65, F75, S3SSJ2G3 and more

ALLOY STEEL & MICROALLOY

EN19, EN24, EN25, EN26, 4130, 4340, 4140, 8620, 8630, F1, F5, F9, F11, F22, F91, F6NM, 42CrMo4, 16Mo3, 25CrMo4, 30CrNiMo8, 10725 AB/BU, 10705 MBU, 10725 BA, C70S6, 20MnCr5, 38MnVS6, 15CDV6, SAS08Gr2

SPECIFICATIONS

As per ASTM, EN, DIN, JIS, BS, ASME, NACE, QQS, AFNOR and more



Our Forgings connects the world

Constant technological upgradation

Strongly believing in constant innovation and technologically upgradation at Goodluck Engineering Co. we make use of the latest techniques to manufacture a wide range of Forged Flanges & Forgings in both semi-finished as well as fully finished condition. We also customize as per the specifications of our clients and make sure that these are superior in quality.

Types

Weld Neck, Lap joint, Slip-on, Blind
Threaded, Socket Welding
Orifice, Spectacle Blind,
Long Weld Necks, Stub Ends,
Forged Bars
Custom Forgings

Material

Stainless Steel
Carbon
Alloy

Special Alloys

Duplex
Super Duplex
Nickel Alloys
Titanium
Aluminium
Copper

Standards & Specifications

ASME, API, ASTM, BS, DIN
EN, MSS, JIS, AWWA



PRODUCTS: SIZE RANGE - FLANGES 1/2" to 114" (10 mm to 3000 mm)*
FORGINGS: WEIGHT RANGE - 1 Kg to 20,000 kgs., Single Piece Forgings.

Standards	Types		
ASME/ANSI B16.5 Pressure Class	:	Welding Neck Flange, Slipon Flange, Blind Flange, High Hub Blind Flange, Socket Weld, Flange, Lap Joint Flange, Threaded Flange, Long Weld-neck Flange 150, 300, 400, 600, 900, 1500, 2500	
ASME/ANSI B16.47 Pressure Class	:	Welding Neck Flange, Blind Flange (Series A & B) 75, 150, 300, 400, 600, 900	
ASME/ANSI B16.36 Pressure Class	:	(Orifice Flanges) Welding Neck Flange, Slipon Flange, Threaded Flange 300, 400 , 600, 900, 1500, 2500	
JIS B2220/B2291 Pressure Class	:	Welding Neck Flange, Slipon Hub Flange, Slipon Plate Flange, Shut off Flange, 5k, 10k, 16k, 20k, 30k	
BS 4504	:	Welding Neck Flange, Hubbed Slipon Flange, Hubbed Threaded Flange, Lapped Pipe End Flange, Plate Flange, Loose Plate Flange, Loose Plate with Weld-neck Flange, Blank Flange	
Pressure Class	:	PN 2.5 To PN 400	
ASME/ANSI B16.9/ MSS SP-43	:	Stub End	Size Range: 1/2" to 24"
DIN Flanges/ EN 1092 - 1	:	DIN2527, DIN2566, DIN2573, DIN2576, DIN2641, DIN2642, DIN2655, DIN2656, DIN2627, DIN2628, DIN2629, DIN2631, DIN2632, DIN2633, DIN2634, DIN2635, DIN2636, DIN2637, DIN2638, DIN2673	
ASME/ANSI B16.48 API 590	:	Figure 8 - Spectacle Blind	
AWWA - C 207	:	Slip on Flange, Blind Flange, Ring	
Forged Bars	:	8" to 32" (200 mm to 800 mm)	
Custom Forgings	:	Forged Pipes, Compact Flange, Valve Components, Anchor Flange, Blocks, Ball, WYE Blocks, Casings	

*As per applicable standard



Forgings product range

Defence



Rudder Trunk



Cross Head Pin



Intermediate Shaft



Forged Shell



Railways



Rotor Shaft



ZrCu Rings



Gear Wheels



Oil & Gas



Valve Casing



Y Block



Flanges



Tube Sheet



Fluid End Frac Pump



Clad Body Valves



Energy & Marine



Hydro Shaft



T Block



Crosshead Pin



Generator Shaft



Hydro Turbine Shaft

Plant & Machinery



Coupling



Barrel



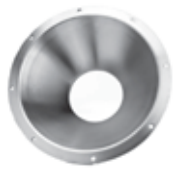
Plate



Square Block



Nozzle



Cones



Hub

Applications in diverse industries

The highest focus on engineering excellence



Hon'ble Ex Commerce Minister (Govt. of India)
Presenting Award to **Shri M. C. Garg (CMD)**

Awards & Recognition

Winners of **Award for Excellence in Exports** for Northern Region from Engineering Export Promotion Council for the last three years.

We have won major certifications from EEPC for our exports to major global destinations.

Also won **Silver Trophy** for two consecutive years from Federation of Indian Export Organization.

Quality is embedded in our culture

Delivering high quality

At Goodluck Engineering Co., we believe in delivering the best of the quality & we do not take any part of production for granted or depend on others for quality. Hence we do not compromise on quality at any stage, which starts at Raw Material Acceptance Stage.

Our quality lab is NABL accredited as per ISO 17025. for Chemical & Mechanical Properties.

Incoming Inspection

Incoming raw material depicts the basic quality of the final product. We make sure that we start with the best raw material.

- Raw material is inspected for:
- Radiation-free material
 - Chemical & Mechanical Properties
 - Surface Quality
 - PMI

In-Process Inspection

Every order is treated like a special order & is treated very delicately at every stage of production.

In-Process material are inspected for:

- Dimensional properties such as tolerance, lobbing, out-of-roundness, straightness & length.

- In-process Mechanical Properties such as Tensile, Elongation, Yield, Reduction of Area, Hardness
- Ultrasonic Test (UT)

Finished Goods Inspection

The quality assurance team in the finished goods department inspects material from the customer's perspective. Finished Goods are inspected for:

- Surface Finish
- Final Mechanical Properties
- Mercury Contamination, Macro and Micro Properties, Inter Granular Impact and Corrosion Properties

- Magnetic Particles Inspection / Dye Penetrant Test
- Packaging, Colour Coding and Marking
- With 3D certification as per request.

Industry Applications

Nuclear Power
Oil & Gas
Petrochemical
Pressure Vessels

Aerospace
Construction Equipment
Defence

Earth Moving
Equipment
Fertilizers
General Engineering
Heat Exchanger

Railway
Thermal Power
Valves
Wind Energy



State-of-the-art
manufacturing facility

450
Customers

Customers spread
across the world

100
Countries

Customers served
globally across all
business verticals

3500+
Workforce

A motivated and
talented team
powering growth

35
Years

Over three decades
of consistent growth
and progress





Clean Energy & Climate Action

has never been
more urgent.

Goodluck as a group
is striving to bring new means
for long term sustainability solutions
in manufacturing.



Solar

In process of installing solar panel on the rooftop giving long term sustainable solution for lightning for plants and offices.

Water

With abundance of rain, rainwater harvesting is one of the most important solutions to the water issue of the future particularly in the developing world.



Offices & Plants

Climate neutral design of offices have been completed for use of more natural lights and increasing green space across all factories.

Being a part of a conscious society, Goodluck ensures that the necessary steps are well taken to protect the environment for future generations to come and keep on pursuing newer ideas and technology implementations.

India is our home & the world, our playground

Export to over 100 countries worldwide



- AUSTRALIA
BELGIUM
BOLIVIA
BRAZIL
CANADA
CHILE

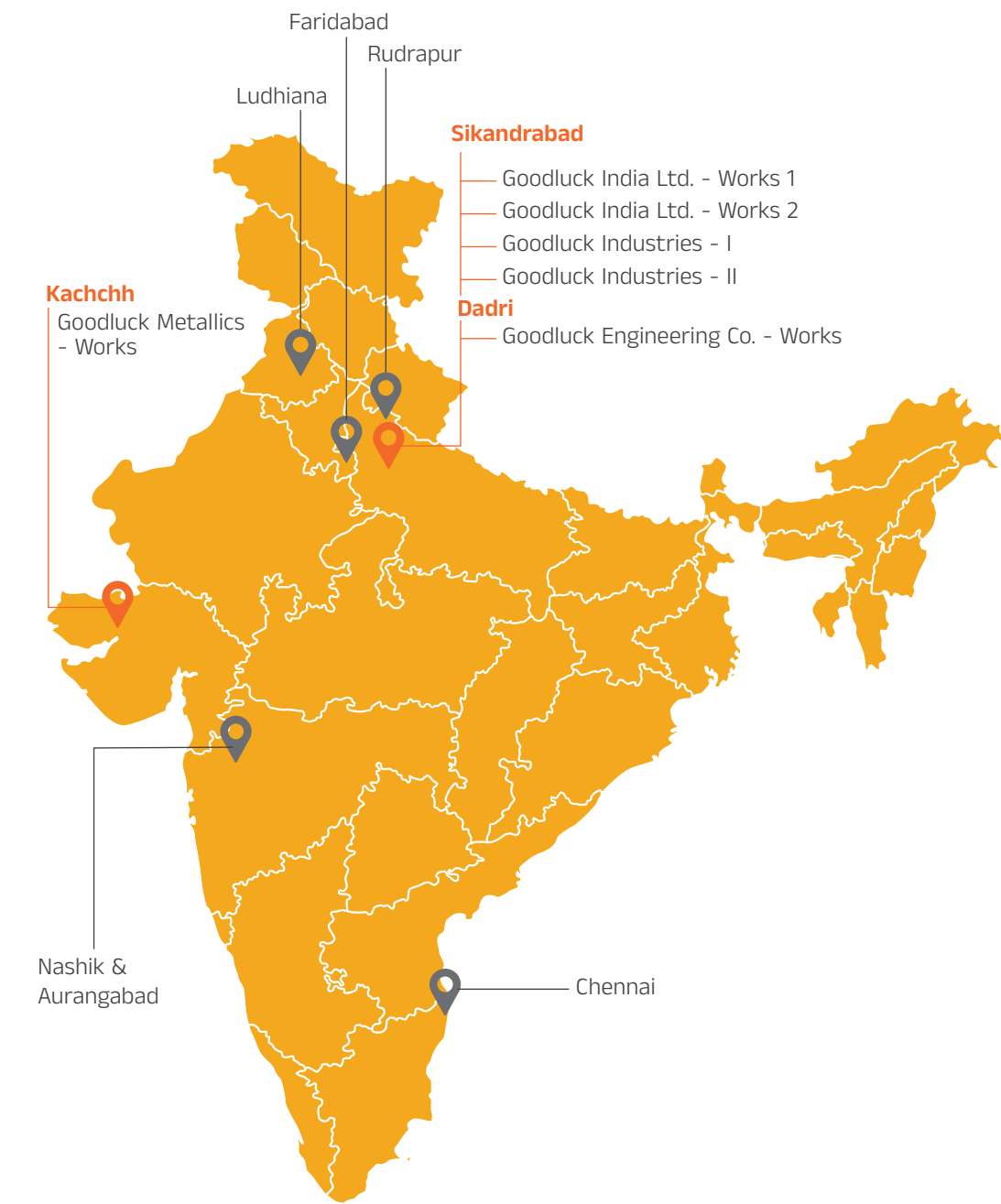
FRANCE
GERMANY
KINGDOM OF SAUDI ARABIA
NEW ZEALAND
NIGERIA
OMAN

SINGAPORE
SOUTH AFRICA
SWEDEN
UNITED STATES OF AMERICA
UNITED ARAB EMIRATES
UNITED KINGDOM

AND TO MORE THAN
100 COUNTRIES...

World-class manufacturing facility in India

With **6 manufacturing facilities** spread across India, we are a part of India's export growth story for products that are vital to several sectors.



- Manufacturing Plant
- Warehouse

Goodluck Engineering Co.

(A Unit of Goodluck India Limited)

A Govt. of India Recognized Export House

Administrative Office

II F 166-167, Goodluck House, Nehru Nagar,
Ambedkar Road, Ghaziabad (U.P.) India

T : +91-120-4196600, 4196700

F : +91-120-4196666, 4196714

Regd. Office

509, Arunachal Building, Barakhamba Road,
Connaught Place, New Delhi-110001. India

T : +91-11-23725686

Factory

Khasra No. 2839, Gram Dhoom Manikpur,
G.T. Road, Gautam Budh Nagar, Dadri, (U.P.) India

hccpl@goodluckindia.com
www.goodluckindia.com



Scan for
digital brochure

Follow us on 